



MONTHLY MEMBERSHIP PROGRESS REPORT

Results as of: 2/28/2015

Multiple District 2

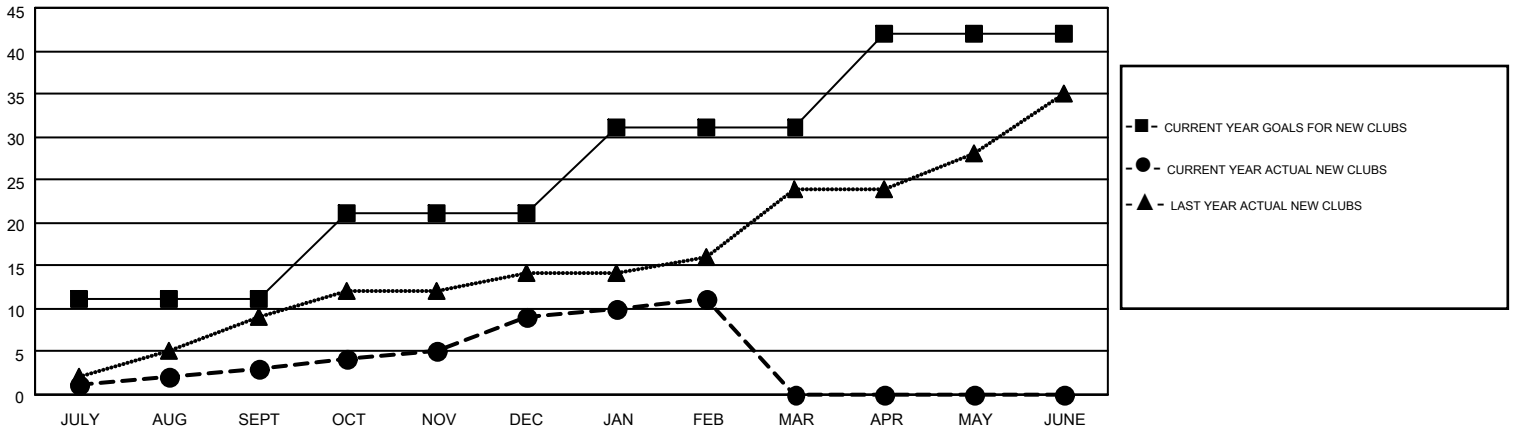
LOCATION: TEXAS

GMT: HAL GRIFFIN

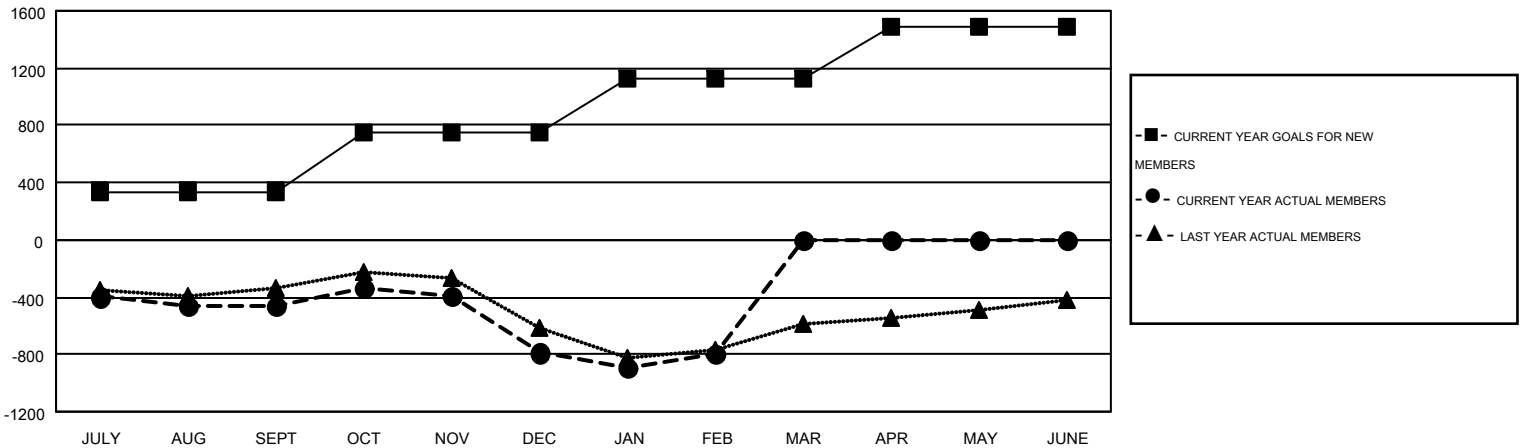
GMT CA 1

Clubs					Members				
RESULTS FOR 2014-2015					RESULTS FOR 2014-2015				
QUARTER	NEW CLUB GOAL	NEW CLUBS	DROPPED CLUBS	NET GAIN/LOSS	QUARTER	NEW MEMBER GOAL	CHARTER AND NEW MEMBERS ADDED	DROPPED MEMBERS	NET GAIN/LOSS
JULY/AUG/SEPT	11	3	9	-6	JULY/AUG/SEPT	339	932	1,389	-457
OCT/NOV/DEC	10	6	17	-11	OCT/NOV/DEC	408	1,041	1,373	-332
JAN/FEB/MAR	10	2	5	-3	JAN/FEB/MAR	377	721	733	-12
APR/MAY/JUNE	11	0	0	0	APR/MAY/JUNE	368	0	0	0

GOALS AND ACTUAL NEW CLUBS CUMULATIVE



GOALS AND ACTUAL MEMBERS CUMULATIVE



DROPPED CLUBS: 31	544 CLUBS OF 917 ADDED 1 OR MORE NEW MEMBERS	<u>GENDER DISTRIBUTION</u>	
<u>DROPPED MEMBERS</u>		MALE	17,427 (67.55%)
DECEASED	CLICK HERE FOR HEALTH ASSESSMENT DATA	FEMALE	8,372 (32.45%)
CLUB CANCELLED		FAMILY UNIT MEMBERS	3,882
OTHER		HEAD OF HOUSEHOLD	1,902
TOTAL		NON-HEAD OF HOUSEHOLD	1,980